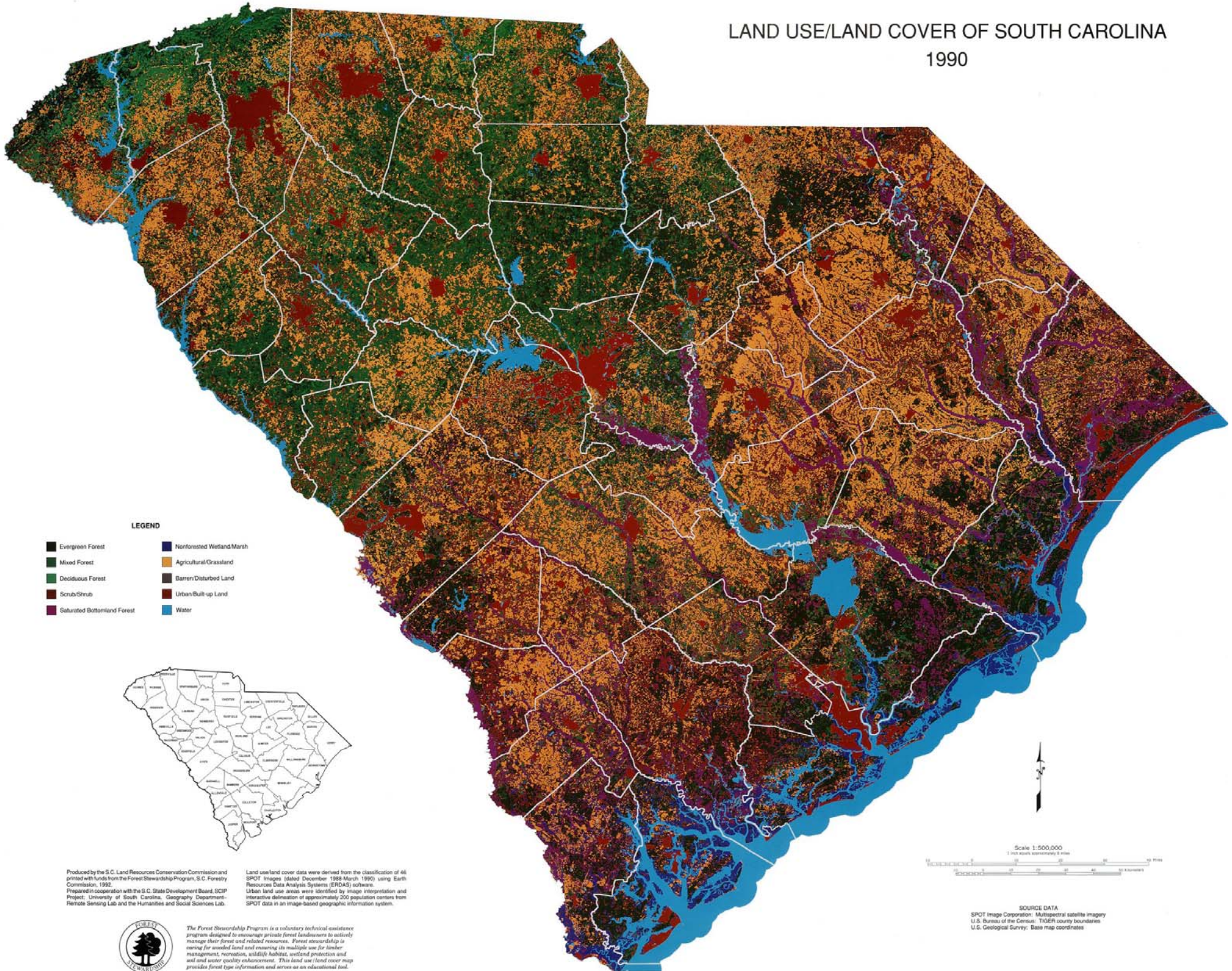


LAND USE/LAND COVER OF SOUTH CAROLINA 1990



LEGEND

- | | |
|-------------------------------|-----------------------------|
| ■ Evergreen Forest | ■ Nonforested Wetland/Marsh |
| ■ Mixed Forest | ■ Agricultural/Grassland |
| ■ Deciduous Forest | ■ Barren/Disturbed Land |
| ■ Scrub/Shrub | ■ Urban/Built-up Land |
| ■ Saturated Bottomland Forest | ■ Water |



Produced by the S.C. Land Resources Conservation Commission and printed with funds from the Forest Stewardship Program, S.C. Forestry Commission, 1992.
Prepared in cooperation with the S.C. State Development Board, SCP Project; University of South Carolina, Geography Department; Remote Sensing Lab and the Humanities and Social Sciences Lab.

Land use/land cover data were derived from the classification of 46 SPOT Images (dated December 1988-March 1990) using Earth Resources Data Analysis Systems (ERDAS) software.
Urban land use areas were identified by image interpretation and interactive delineation of approximately 200 population centers from SPOT data in an image-based geographic information system.



The Forest Stewardship Program is a voluntary technical assistance program designed to encourage private forest landowners to actively manage their forest and related resources. Forest stewardship is caring for wooded land and ensuring its multiple use for timber management, recreation, wildlife habitat, wetland protection and soil and water quality enhancement. This land use/land cover map provides forest type information and serves as an educational tool.



SOURCE DATA
SPOT Image Corporation; Multispectral satellite imagery
U.S. Bureau of the Census; TIGER county boundaries
U.S. Geological Survey; Base map coordinates