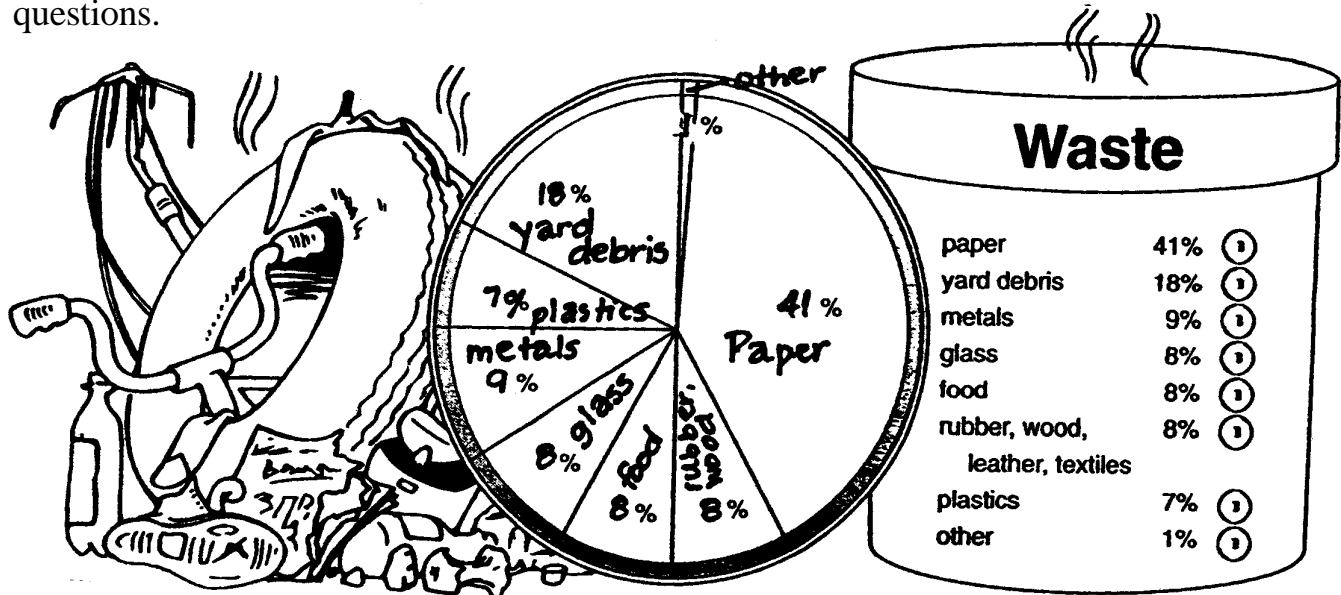


## What a Waste!

Can you believe how much trash we throw out every day? Use the pie graph to answer the questions.



- Nearly half of all the waste shown on the graph belongs in which category?
- List three types of materials that could be found in this category and could be recycled.
- What percentage of the total waste is not included in the paper category?
- The second largest category of the total waste contains items that are usually found in nature. List five items that might be found in this category.
- How much more of the total waste comes from yard debris than from rubber, wood, leather, and textiles?
- Twenty-four percent of the waste shown on the graph comes from three categories, each with the same amount of waste. What are the categories? List an example of two items that might be thrown away in each of these categories.
- On the back of this page, make a list of 15 items you throw away at home. Divide these into the categories above. Then make a bar graph estimating the amount of trash you throw away in each category.