

Address all questions to:
South Carolina ETV
Educational Technology
1101 George Rogers Blvd.
Columbia, SC 29201
800-922-4848



IP Media Distribution System Specifications

Server configuration:



Dual Quad Core 2.5 GHz ZEON processors (8 CPU)
48 Gigs of RAM
250 Gig boot drive (SATA) in RAID 1 configuration
SIX 2Terabyte 7.2K RPM Universal nSATA 3Gbps
3.5-in HotPlug Hard Drive in RAID 5 configuration
PCIe architecture
Dual Gigabit NIC
Redundant power supplies
Rack mounted (6U configuration)

Internal PCIe encoder capture hardware
four channel with 4x stereo
breakout cable (2X – Osprey 440e)



The IP Media Distribution system is based on DELL system technology – for interoperability, no substitutions are possible

External RAID array high capacity storage:

UPGRADE PATH: system RAID controller is capable of hosting up to six MD1000 external arrays for a total of **144T of RAID 5 storage w/hot-swap.**
(using current industry standard 2T nSATA H/D)



Software:

Host Operating System: Windows 2008 Enterprise R2 with HYPER-V Technology.

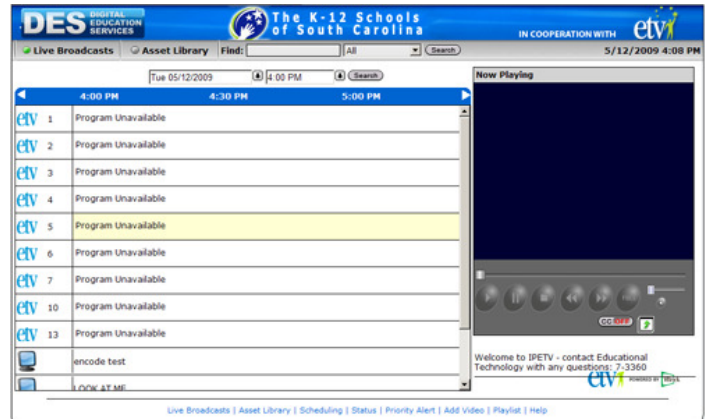
Virtualized Server OS: Windows 2003 Web-Server allows for easy integration with current network OS and any LDAP authentication mechanisms, if opting to bind the IP Media System with your LDAP services.

VBrick Media Control Server - Portal server

Display interface for access to LIVE streams and archived media.

EtherneTV Scheduling Module: VBrick Scheduler

Browser-based interface allows for Content Management, scheduling of recordings and re-broadcasts of archived “on-demand” media. H.264 capable.



StreamlineSC Services and content Discovery Server JAVA Application



Management software for Discovery content server
(Internal to district WAN)
Automates the local StreamlineSC content
All current StreamlineSC media will be
pre-loaded.

VBrick Encoder Hardware:
2X *Windows Media format* VBrick
Dual-Channel Encoder hardware.



6 foot Dell 4210 Rack

**System Training for district Media Specialists
and IT Administration team.**

System will be managed and supported by SCETV Educational Technology department

	QUANTITY: 1	Host Server
Base Unit:		Quad Core Xeon E5420 Processor 2x6MB Cache, 2.5GHz, 1333MHz FSB, PE1950 (223-4545)
Processor:		Quad Core Xeon E5420 2nd Processor, 2x6MB Cache, 2.5GHz 1333MHz FSB, PE1950 (311-7952)
Memory:		48GB 667MHz (4x4GB), Dual Ranked DIMMs (311-6326)
		LOM NICs are TOE Ready (430-2968)
Hard Drive:		250 GB SATA Boot drive in RAID 1 – Quantity 2
Hard Drive:		Hard Drive MultiSelect Option (465-5674)
Hard Drive Controller:		PERC6i SAS RAID Controller 2x4 Connectors, Int, PCIe 256MB Cache (341-5781)
Operating System:		Windows 2008 Enterprise R2
NIC:		Dual Embedded Broadcom NetXtreme II 5708 Gigabit Ethernet NIC (430-1762)
CD-ROM or DVD-ROM Drive:		8X DVD-ROM for PowerEdge 1950 (313-4310)
Sound Card:		Bezel for PE 1950 (313-3937)
Speakers:		1x2 Backplane for 3.5-inc Hard Drives (311-7958)
Documentation Diskette:		Electronic Documentation and OpenManage DVD Kit (310-7962)
Controller Option:		PERC6E SAS RAID Controller 2x4 Connectors, External, PCIe 512MB cache (341-5841)
Feature		Integrated SAS/SATA RAID 1 PERC 6/i Integrated/SAS6/iR (341-5776)
Feature		Sliding Rapid/Versa Rails and Cable Management Arm, Universal (341-3090)
Service:		Dell Hardware Warranty Plus Onsite Service Initial YR (984-1519)
Service:		Dell Hardware Warranty, Extended Year(s) (984-1528)
		Keyboard / Mouse
		MISSION CRITICAL PACKAGE: Enhanced Services, 3 Year (990-0288) from Dell
Service:		
Service:		Pro Support for IT: remote administration / support of system – patch upgrades
Installation:		On-Site Installation Included – ETV Educational Technology support technicians
Misc:		Energy Smart Redundant Power Supply with Y-Cord (310-9933)
Misc:		Power Cord, NEMA 5-15P to C14, 15 amp, wall plug, 10 feet / 3 meter (310-8509)
Misc:		Power Cord, NEMA 5-15P to C14, 15 amp, wall plug, 10 feet / 3 meter (310-8509)
		2T-2000GB 7.2K RPM SATA 3Gbps 3.5-in HotPlug HardDrive - Quantity 6

	QUANTITY: 1	
Base Unit:		Dell 4210 Rack enclosure with
Base Unit:		Standard 19" Shelf for satellite receivers - black
Base Unit:		VBrick Dual Channel Windows Media encoders Power supplies, BNC connect, stereo 1/8 to cinch audio connect and remote connect kit(s) Quantity -2
Base Unit:		Pansat Satellite receiver Quantity – 4
Software:		Windows 2005 Virtual Server
Software:		Windows 2003 Enterprise server (Virtualized)
Software:		VBrick Portal software package – Full Ethernet TV portal software package for accessing LIVE and on demand content
Software:		Ethernet TV Scheduling module: allows scheduling of recorder, VOD server and set-top boxes. Portal server licensing for VOD server
Software:		Discovery Manager Host software: Server Manager for STREAMLINE SC content
Per-loaded content:		Discovery Education content pre-loaded
Service:		Type 2 Contract - Same Day 4-Hour 7x24 Parts and Labor Onsite Response, 2 Year Extended (981-1052) (Dell corporate support)
Service:		Premier Enterprise Gold On Demand Engineer Dispatch Severity 1 Three Years (981-6152)
Service:		Type 2 Contract - Same Day 4-Hour 7x24 Parts and Labor Onsite Response, Initial Year (981-6590)
Installation:		On-Site Installation – ETV Educational Technology support
Service and Support:		All installation will be managed by ETV Educational Technology support personnel.
		Administration of system(s) will be managed by Educational Technology support personnel.
TOTAL PACKAGE COST:		\$55,000.00